

# Women's Active

Women's  
Active





# Women's Active

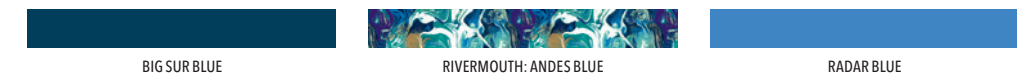
## Color Stories



1 W's Houdini® Jacket 24146 2 W's Capilene® Lightweight Tank 45675  
3 W's Nine Trails Shorts 57621 4 W's Active Compression Bra 32070 5 Duckbill Cap 28816



1 W's Centered Bra 32065 2 W's Centered Crops - 20½" 21915  
3 W's Fleur Tank 54932 4 Lightweight Black Hole™ Gear Tote 28L 49030



1 W's Airshed Pullover 24195 2 W's Capilene® Lightweight Tank 45675  
3 W's Strider Pro Shorts - 2½" 24656 4 Duckbill Cap 28816



1 W's Dirt Craft Jacket 24030 2 W's Crank Craft Jersey 24370 3 W's Dirt Craft Bike Shorts 24585  
4 W's Storm Racer Jacket 24115 5 Nine Trails Pack 15L 49510





# Women's Active

## Trail Running & Yoga

Jan 1 2017

Built for a range of active needs from daily training runs to marathon yoga sessions to long backcountry adventures, our Active Wear is made with the best materials and construction for enduring comfort, no matter the objective.



TRUT True Teal RAD Radar Blue CFTP Craft Pink INBK Ink Black

### W's Nine Trails Tank

23495 | Slim fit | 82 g (2.9 oz) | XS-XL

**FABRIC** 4-oz 100% polyester spun jersey with Polygiene® permanent odor control. Fabric is bluesign® approved



CFTP Craft Pink RAD Radar Blue INBK Ink Black TRUT True Teal

### W's Short-Sleeved Nine Trails Shirt

23475 | Slim fit | 102 g (3.6 oz) | XS-XL

**FABRIC** 4-oz 100% polyester spun jersey with Polygiene® permanent odor control. Fabric is bluesign® approved

# Women's Active

## Trail Running & Yoga

Jan 1 2017



BLK Black FGE Forge Grey RMAB Rivermouth: Andes Blue

### W's Centered Bra NEW

32065 | Formfitting | 69 g (2.5 oz) | XS-XL

**FABRIC** Solids: 8.5-oz 85% nylon/15% spandex jersey. Heathers: 8-oz 87% polyester/13% spandex heathered jersey. Prints: 8.9-oz 89% recycled polyester/11% spandex jersey. Lining: 88% polyester/12% spandex double knit. Center-back mesh: 91% nylon/9% spandex circular knit. Fair Trade Certified™ sewing. Fabrics are bluesign® approved



INBK Ink Black BSRB Big Sur Blue CRVC Carve Coral

### W's Active Compression Bra NEW

32070 | Formfitting | 82 g (2.9 oz) | XS-XL

**FABRIC** 90% nylon (56% recycled)/10% spandex with Polygiene® permanent odor control



BLK Black RRDB Rivermouth: Radar Blue RVMP Rivermouth: Craft Pink PSKP Petoskey Purple

### W's Nine Trails Shorts

57621 | Regular fit | 111 g (3.9 oz) | XS-XL

**FABRIC** Body: 3.5-oz 75-denier 91% recycled polyester/9% spandex with 4-way stretch and a DWR (durable water repellent) finish. Waistband: 5.6-oz 88% polyester/12% spandex. Lining: 3.8-oz microdenier 100% polyester mesh with Polygiene® permanent odor control. Fabric is bluesign® approved



NUVG Nouveau Green BSRB Big Sur Blue CRVC Carve Coral

### W's Strider Pro Shorts - 2 1/2" REVISED

24656 | Regular fit | 94 g (3.3 oz) | XXS-XL

**FABRIC** Body: 2.4-oz 100% polyester micro dobby with a DWR (durable water repellent) finish. Panels: 2.4-oz 100% polyester highly breathable mesh. Rear pockets and waistband: 4.2-oz 79% nylon/21% spandex jersey. Lining: 2.7-oz 58% polyester/42% recycled polyester crepe with Polygiene® permanent odor control. Fabric is bluesign® approved



INBK Ink Black BSRB Big Sur Blue PUR Purple GLHG Galah Green

### W's Fleur Tank

54932 | Regular fit | 111 g (3.9 oz) | XS-XL

**FABRIC** 5.4-oz 89% recycled polyester/11% spandex heathered jersey. Fabric is bluesign® approved



RWPR Reef Waves: Purple RWBB Reef Waves: Big Sur Blue RMPP Rivermouth: Petoskey Purple RMGG Rivermouth: Galah Green

### W's Latticeback Tank

54770 | Slim fit | 159 g (5.6 oz) | XS-XL

**FABRIC** 5.6-oz 88% polyester/12% spandex stretch jersey. Shelf bra: 5.6-oz 88% nylon/12% spandex. Fabric is bluesign® approved



BLK Black BSRB Big Sur Blue

### W's Diversifly Speed Shorts NEW

24520 | Formfitting | 96 g (3.4 oz) | XXS-XL

**FABRIC** Body: 5.5-oz 85% nylon/15% spandex with an antimicrobial finish. Contrast: 5.8-oz 83% polyester/17% spandex. Fabric is bluesign® approved



BLK Black BSRB Big Sur Blue

### W's Diversifly Capris NEW

24510 | Formfitting | 147 g (5.2 oz) | XXS-XL

**FABRIC** Body: 5.5-oz 85% nylon/15% spandex with an antimicrobial finish. Contrast: 5.8-oz 83% polyester/17% spandex. Fabric is bluesign® approved



BLK Black FGE Forge Grey BSRB Big Sur Blue RMAB Rivermouth: Andes Blue TFBK Tidal Flats: Black

### W's Centered Crops - 20 1/2"

21915 | Formfitting | 181 g (6.4 oz) | Regular rise | Fitted leg | XS-XL

**FABRIC** Solids: 8.5-oz 85% nylon/15% spandex jersey. Heathers: 8-oz 87% polyester/13% spandex heathered jersey. Prints: 8.9-oz 89% recycled polyester/11% spandex jersey. Fair Trade Certified™ sewing. Fabric is bluesign® approved



BLK Black FEG Forge Grey w/ Forge Grey RMAB Rivermouth: Andes Blue

### W's Centered Tights

21960 | Formfitting | 227 g (8 oz) | Regular rise | Fitted leg | XS-XL

**FABRIC** Solids: 8.5-oz 85% nylon/15% spandex jersey. Heathers: 8-oz 87% polyester/13% spandex heathered jersey. Prints: 8.9-oz 89% recycled polyester/11% spandex jersey. Fair Trade Certified™ sewing. Fabric is bluesign® approved

# Women's Active

## Mountain Biking

Jan 1 2017

Built for those who love going both up and down the trail on a bike, we've expanded our Mountain Biking kit with a specific jersey fabric as well as breathable layers for keeping you comfortable while getting after it.

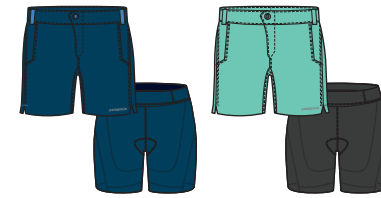


CRVC Carve Coral  
RAD Radar Blue  
GLHG Galah Green

### W's Crank Craft Jersey **NEW**

24370 | Regular fit | 85 g (3 oz) | XXS-XL

**FABRIC** 2.8-oz 100% recycled polyester circular-knit eyelet. Fabric is bluesign® approved



BSRB Big Sur Blue  
GLHG Galah Green

### W's Dirt Craft Bike Shorts

24585 | Slim fit | 306 g (10.8 oz) | XS-XL

**FABRIC** Outer short: 4.5-oz 96% nylon/4% spandex stretch plain weave with a DWR (durable water repellent) finish. Liner: 5.2-oz 72% polyester/28% spandex stretch interlock knit with breathable 80% nylon/20% spandex power mesh panels



NUVG Nouveau Green  
BSRB Big Sur Blue  
CFIP Craft Pink

### W's Dirt Craft Jacket

24030 | Slim fit | 258 g (9.1 oz) | XS-XL

**FABRIC** 4.2-oz 95% nylon (60% recycled)/5% spandex stretch ripstop with a DWR (durable water repellent) finish. Fabric is bluesign® approved



CRVC Carve Coral  
BSRB Big Sur Blue

### W's Airshed Pullover **NEW**

24195 | Slim fit | 94 g (3.3 oz) | XXS-XL

**FABRIC** Body: 1.3-oz 20-denier 100% nylon mechanical stretch ripstop with a DWR (durable water repellent) finish. Hem and cuff panels: 4.2-oz 79% nylon/21% spandex jersey



NUVG Nouveau Green  
OCBS Open Oceans: Big Sur Blue  
OOTG Open Oceans: Tailored Grey

### W's All Weather Zip-Neck

24208 | Slim fit | 173 g (6.1 oz) | XS-XL

**FABRIC** 5.6-oz 88% polyester/12% spandex jersey knit. Panels: 3.2-oz 100% polyester (50% recycled) highly breathable mesh with Polygiene® permanent odor control. Fabric is bluesign® approved

# Women's Active

## Outerwear

Jan 1 2017

Versatile and ultrapackable, our Active Outerwear provides featherweight protection from the elements and disappears into their own pockets when not needed.



BLK Black  
CRVC Carve Coral

### W's Storm Racer Jacket **NEW**

24115 | Slim fit | 156 g (5.5 oz) | XXS-XL

**FABRIC** H<sub>2</sub>No® Performance Standard shell: 3-layer, 1.74-oz 12-denier 100% nylon ripstop with a 7-denier tricot backer, waterproof/breathable barrier and a DWR (durable water repellent) finish

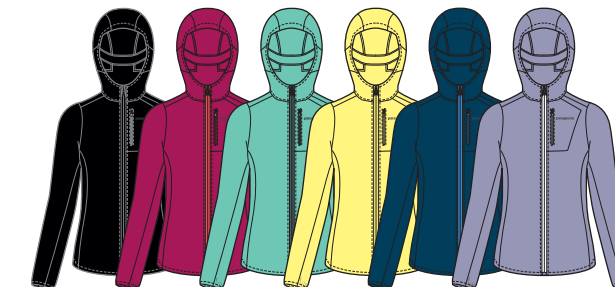


BLK Black  
CRVC Carve Coral  
TRUT True Teal

### W's Houdini® Pullover

24161 | Slim fit | 85 g (3 oz) | XS-XL

**FABRIC** 1.2-oz 15-denier 100% nylon ripstop with a DWR (durable water repellent) finish

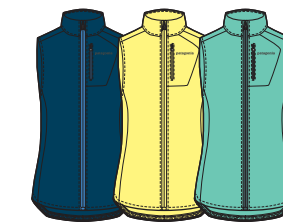


BLK Black  
CFIP Craft Pink  
GLHG Galah Green  
YKYW Yoke Yellow  
BSRB Big Sur Blue  
PSKP Petoskey Purple

### W's Houdini® Jacket

24146 | Slim fit | 94 g (3.3 oz) | XS-XL

**FABRIC** 1.2-oz 15-denier 100% nylon ripstop with a DWR (durable water repellent) finish



BSRB Big Sur Blue  
YKYW Yoke Yellow  
GLHG Galah Green

### W's Houdini® Vest

24180 | Slim fit | 60 g (2.1 oz) | XS-XL

**FABRIC** 1.2-oz 15-denier 100% nylon ripstop with a DWR (durable water repellent) finish



BLK Black  
NVVB Navy Blue

### Houdini® Pants

24131 | Slim fit | 96 g (3.4 oz) | XXS-XL

**FABRIC** 1.2-oz 15-denier 100% nylon ripstop with a DWR (durable water repellent) finish



# Women's Active

## Technical Tees

Jan 1 2017

Capilene® Daily provides comfort and wicking performance to support your active pursuits, no matter how far they take you.



RAD Radar Blue CFTP Craft Pink GLHG Galah Green

### W's Capilene® Daily Tank REVISED

45306 | Regular fit | 68 g (2.4 oz) | XS-XL

FABRIC 3.7-oz (125-g) 100% recycled polyester jersey with Polygiene® permanent odor control. Fair Trade Certified™ sewing. Fabric is bluesign® approved



PTLW Pastel P-6 Logo: White MTPD Mt. Minded Peaks: Drifter Grey Heather ATDG Arched Type 75: Drifter Grey Heather OTGL Outline Text Logo: Galah Green

### W's Capilene® Daily Graphic T-Shirt REVISED

45291 | Regular fit | 96 g (3.4 oz) | XS-XL

FABRIC 3.7-oz (125-g) 100% recycled polyester jersey with Polygiene® permanent odor control. Fair Trade Certified™ sewing. Fabric is bluesign® approved



BLK Black DFTG Drifter Grey GLHG Galah Green RAD Radar Blue CFTP Craft Pink

### W's Capilene® Daily T-Shirt REVISED

45276 | Regular fit | 94 g (3.3 oz) | XS-XL

FABRIC 3.7-oz (125-g) 100% recycled polyester jersey with Polygiene® permanent odor control. Fair Trade Certified™ sewing. Fabric is bluesign® approved



BLK Black DFTG Drifter Grey BSRB Big Sur Blue RAD Radar Blue CFTP Craft Pink

### W's Capilene® Daily Long-Sleeved T-Shirt REVISED

45266 | Regular fit | 128 g (4.5 oz) | XS-XL

FABRIC 3.7-oz (125-g) 100% recycled polyester jersey with Polygiene® permanent odor control. Fair Trade Certified™ sewing. Fabric is bluesign® approved



# Women's Active

## Technical Tees

Jan 1 2017

Capilene® Lightweight provides breathability and outstanding moisture management to maintain core comfort during high-output activities.



BLK Black CRVC Carve Coral TRUT True Teal BSRB Big Sur Blue

### W's Capilene® Lightweight Tank NEW

45675 | Slim fit | 45 g (1.6 oz) | XS-XL

FABRIC 2.3-oz (80-g) 100% recycled polyester double knit with Polygiene® permanent odor control. Fair Trade Certified™ sewing. Fabric is bluesign® approved



BLK Black WHI White GLHG Galah Green CFTP Craft Pink PSKP Petoskey Purple BSRB Big Sur Blue

### W's Capilene® Lightweight T-Shirt

45656 | Slim fit | 65 g (2.3 oz) | XXS-XL

FABRIC 2.3-oz (80-g) 100% recycled polyester double knit with Polygiene® permanent odor control. Fair Trade Certified™ sewing. Fabric is bluesign® approved



BLK Black WHI White TRUT True Teal CRVC Carve Coral PSKP Petoskey Purple RAD Radar Blue

### W's Capilene® Lightweight Crew

45646 | Slim fit | 82 g (2.9 oz) | XXS-XL

FABRIC 2.3-oz (80-g) 100% recycled polyester double knit with Polygiene® permanent odor control. Fair Trade Certified™ sewing. Fabric is bluesign® approved



BLK Black WHI White CFTP Craft Pink BSRB Big Sur Blue

### W's Capilene® Lightweight Zip-Neck

45575 | Slim fit | 102 g (3.6 oz) | XS-XL

FABRIC 2.3-oz (80-g) 100% recycled polyester double knit with Polygiene® permanent odor control. Fair Trade Certified™ sewing. Fabric is bluesign® approved





# Women's Active

Jan 1 2017

## Baselayer

Designed to provide comfort next to skin during cold weather, our three baselayer weights of warmth provide exceptional moisture management for easy layering.



BLK Black  
FTGX Feather Grey Tailored Grey X-Dye  
NVYB Navy Blue  
CFTP Craft Pink  
BABX Big Sur Blue Andes Blue X-Dye  
PSKP Petoskey Purple



BLK Black  
FTGX Feather Grey Tailored Grey X-Dye  
NVYB Navy Blue  
CFTP Craft Pink  
BABX Big Sur Blue Andes Blue X-Dye

### W's Capilene® Midweight Crew



44435 | Slim fit | 153 g (5.4 oz) | XXS-XL

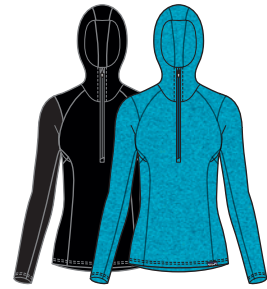
FABRIC Solids: 4.4-oz (150-g) Polartec® Power Grid™ 100% polyester (93% recycled) double knit; heathers: 4.8-oz (160-g) Polartec Power Grid 100% polyester (63% recycled) double knit. Both with Polygiene® permanent odor control. Fair Trade Certified™ sewing. Fabric is bluesign® approved

### W's Capilene® Midweight Zip-Neck



44455 | Slim fit | 167 g (5.9 oz) | XXS-XL

FABRIC Solids: 4.4-oz (150-g) Polartec® Power Grid™ 100% polyester (93% recycled) double knit; heathers: 4.8-oz (160-g) Polartec Power Grid 100% polyester (63% recycled) double knit. Both with Polygiene® permanent odor control. Fair Trade Certified™ sewing. Fabric is bluesign® approved



BLK Black  
UJWX Ultramarine-Underwater Blue X-Dye

### W's Capilene® Thermal Weight Zip-Neck Hoody



43672 | Slim fit | 184 g (6.5 oz) | XXS-XL

FABRIC 3.8-oz (129-g) Polartec® Power Grid™ fabric. Solids: 92% recycled polyester/8% spandex; heathers: 92% polyester (30% recycled)/8% spandex; both with Polygiene® permanent odor control. Fair Trade Certified™ sewing. Fabric is bluesign® approved



BLK Black  
UJWX Ultramarine-Underwater Blue X-Dye

### W's Capilene® Thermal Weight Crew



43650 | Slim fit | 122 g (4.3 oz) | XXS-XL

FABRIC 3.8-oz (129-g) Polartec® Power Grid™ fabric. Solids: 92% recycled polyester/8% spandex; heathers: 92% polyester (30% recycled)/8% spandex; both with Polygiene® permanent odor control. Fair Trade Certified™ sewing. Fabric is bluesign® approved



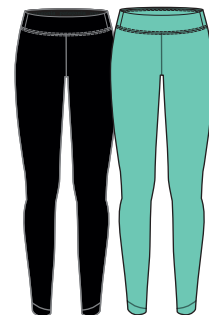
BLK Black  
UJWX Ultramarine-Underwater Blue X-Dye

### W's Capilene® Thermal Weight Zip-Neck



43662 | Slim fit | 139 g (4.9 oz) | XXS-XL

FABRIC 3.8-oz (129-g) Polartec® Power Grid™ fabric. Solids: 92% recycled polyester/8% spandex; heathers: 92% polyester (30% recycled)/8% spandex; both with Polygiene® permanent odor control. Fair Trade Certified™ sewing. Fabric is bluesign® approved



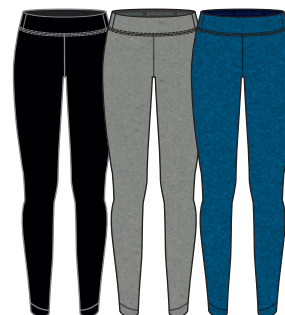
BLK Black  
GLHG Galah Green

### W's Capilene® Lightweight Bottoms



45686 | Slim fit | 94 g (3.3 oz) | XXS-XL

FABRIC 2.3-oz (80-g) 100% recycled polyester double knit with Polygiene® permanent odor control. Fair Trade Certified™ sewing. Fabric is bluesign® approved



BLK Black  
FTGX Feather Grey Tailored Grey X-Dye  
BABX Big Sur Blue Andes Blue X-Dye

### W's Capilene® Midweight Bottoms



44490 | Slim fit | 176 g (6.2 oz) | XXS-XL

FABRIC 5.2-oz (175-g) Polartec® Power Grid™ 97% polyester (solids: 66% recycled; heathers: 33% recycled)/3% spandex with Polygiene® permanent odor control. Fair Trade Certified™ sewing. Fabric is bluesign® approved



BLK Black  
UJWX Ultramarine-Underwater Blue X-Dye

### W's Capilene® Thermal Weight Bottoms



43692 | Slim fit | 139 g (4.9 oz) | XXS-XL

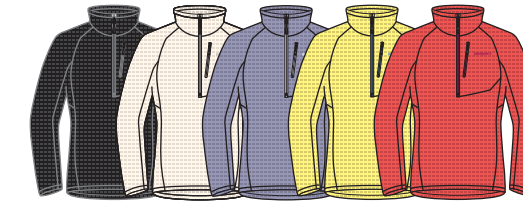
FABRIC 3.8-oz (129-g) Polartec® Power Grid™ fabric. Solids: 92% recycled polyester/8% spandex; heathers: 92% polyester (30% recycled)/8% spandex; both with Polygiene® permanent odor control. Fair Trade Certified™ sewing. Fabric is bluesign® approved

# Women's Active

Jan 1 2017

## Midlayer

Our Regulator® collection offers three weights of warmth, breathability, stretch and moisture management for exceptional all-day comfort in your multisport layering system.



BLK Black  
BCW Birch White  
PSKP Petoskey Purple  
YKYW Yoke Yellow  
CRVC Carve Coral

### W's R1® Pullover



40118 | Slim fit | 280 g (9.9 oz) | XXS-XL

FABRIC 6.3-oz Polartec® Power Grid™ 93% recycled polyester/7% spandex with Polygiene® permanent odor control. Fabric is bluesign® approved



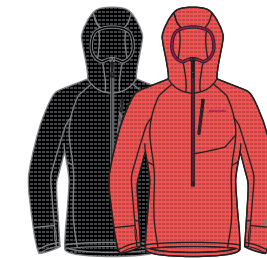
BLK Black  
BSRB Big Sur Blue  
TRUT True Teal  
CFTP Craft Pink

### W's R1® Full-Zip Jacket



40138 | Slim fit | 318 g (11.2 oz) | XXS-XL

FABRIC 6.3-oz Polartec® Power Grid™ 93% recycled polyester/7% spandex with Polygiene® permanent odor control. Fabric is bluesign® approved



BLK Black  
CRVC Carve Coral

### W's R1® Hoody



40076 | Slim fit | 303 g (10.7 oz) | XXS-XL

FABRIC 6.3-oz Polartec® Power Grid™ 93% recycled polyester/7% spandex with Polygiene® permanent odor control. Fabric is bluesign® approved



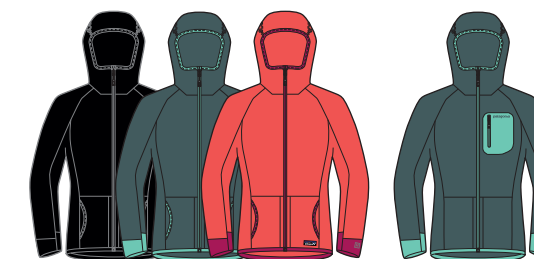
BLK Black  
TGY Tailored Grey  
BSRB Big Sur Blue  
CFTP Craft Pink  
BCW Birch White

### W's R2® Jacket



25148 | Slim fit | 332 g (11.7 oz) | XXS-XL

FABRIC Body: 6.1-oz Polartec® Thermal Pro™ 97% polyester (63% recycled)/3% spandex. Side panels and cuffs: 6.3-oz Polartec Power Grid™ 93% recycled polyester/7% spandex. Fabric is bluesign® approved



BLK Black  
NUVG Nouveau Green  
CRVC Carve Coral  
reverse

### W's R3® Hoody



25708 | Regular fit | 428 g (15.1 oz) | XXS-XL

FABRIC Body: 8.9-oz Polartec® High Loft™ 97% polyester (53% recycled)/3% spandex. Cuffs: 6.9-oz Polartec Power Grid™ 93% recycled polyester/7% spandex. Pockets: 3.4-oz 100% nylon woven. Fabric is bluesign® approved