

Women's Alpine



Women's Alpine

Color Stories



1 W's Cloud Ridge Jacket 83685 2 W's Femme Fitz Roy Interstate Hat 38145 3 W's Simul Alpine Pants 83065 4 W's Nano-Air® Hoody 84265
 5 Ascensionist 40L 48002 6 W's Capilene® Daily Tank 45306 7 W's R1® Pullover 40118



1 W's Down Shirt 84751 2 El Cap Classic Interstate Hat 38191 3 W's Venga Rock Pants 83085 4 W's Houdini® Pullover 24161
 5 Black Hole™ Pack 25L 49296 6 W's All Weather Zip-Neck 24208 7 W's Active Mesh Bra 32106



Women's Alpine

Line at a glance

2.5-Layer Hard Shells

83807 W's Torrentshell Jacket



83817 W's Torrentshell Pants



84810 W's Stretch Rainshadow Jacket



85196 W's Alpine Houdini® Jacket



85215 W's Alpine Houdini® Pants



Down Insulation

84711 W's Down Sweater Hoody



84683 W's Down Sweater



84628 W's Down Sweater Vest



84751 W's Down Shirt



84772 W's Ultralight Down Hoody



84762 W's Ultralight Down Jacket



84781 W's Ultralight Down Vest



Synthetic Insulation

84227 W's Nano Puff® Hoody



84196 W's Nano Puff® Bivy Pullover



84027 W's Nano Puff® Pullover



84217 W's Nano Puff® Jacket



84247 W's Nano Puff® Vest



3-Layer Hard Shells

84177 W's M10™ Jacket



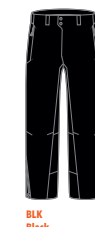
83685 W's Cloud Ridge Jacket NEW



83406 W's Triolet Jacket



83220 W's Triolet Pants



Soft Shells & Climb Pants

83455 W's Adze Hybrid Jacket



83035 W's Levitation Hoody



83025 W's All Free Jacket



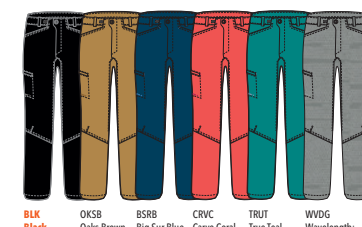
83065 W's Simul Alpine Pants



83075 W's RPS Rock Pants



83085 W's Venga Rock Pants



83095 W's Venga Rock Capris



Synthetic Insulation

84350 W's Nano-Air® Light Hybrid Jacket NEW



84360 W's Nano-Air® Light Hybrid Vest NEW



84265 W's Nano-Air® Hoody



84255 W's Nano-Air® Jacket



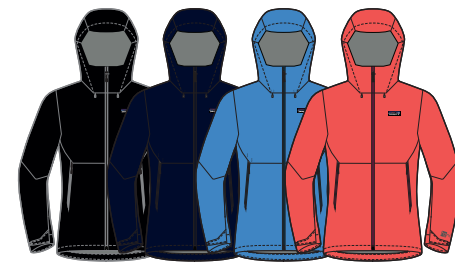
84275 W's Nano-Air® Vest



Women's Alpine

Hard Shells

Jan 1 2017



BLK Black NVYB Navy Blue RAD Radar Blue CRVC Carve Coral

W's Cloud Ridge Jacket **NEW**

83685 | Regular fit | 343 g (12.1 oz) | XXS-XL

FABRIC H₂No[®] Performance Standard shell: 3-layer, 3.4-oz 30-denier 100% recycled polyester ripstop with a recyclable polyester waterproof/breathable barrier and backer and a DWR (durable water repellent) finish



BLK Black NVYB Navy Blue BCW Birch White RAD Radar Blue YKYW Yoke Yellow CFTP Craft Pink GLHG Galah Green PSKP Petoskey Purple CRVC Carve Coral GNVG Galah Green w/ Nouveau Green RDBS Radar Blue w/ Big Sur Blue

W's Torrentshell Jacket

83807 | Regular fit | 301 g (10.6 oz) | XXS-XL

FABRIC H₂No[®] Performance Standard shell: 2.5-layer, 2.9-oz 50-denier 100% recycled nylon ripstop with a waterproof/breathable barrier and a DWR (durable water repellent) finish. Fabric is bluesign[®] approved



BLK Black BSRB Big Sur Blue CRVC Carve Coral CFTP Craft Pink GLHG Galah Green

W's Stretch Rainshadow Jacket

84810 | Regular fit | 261 g (9.2 oz) | XXS-XL

FABRIC H₂No[®] Performance Standard shell: 2.5-layer, 2.2-oz 30-denier 100% nylon ripstop with a waterproof/breathable barrier and a DWR (durable water repellent) finish



BLK Black NVYB Navy Blue

W's Torrentshell Pants

83817 | Regular fit | 264 g (9.3 oz) | XXS-XL

FABRIC H₂No[®] Performance Standard shell: 2.5-layer, 2.9-oz 50-denier 100% recycled nylon ripstop with a waterproof/breathable barrier and a DWR (durable water repellent) finish. Fabric is bluesign[®] approved

Women's Alpine

Hard Shells

Jan 1 2017



BSRB Big Sur Blue TRUT True Teal

W's M10™ Jacket

84177 | Regular fit | 241 g (8.5 oz) | XXS-XL

FABRIC H₂No[®] Performance Standard shell: 3-layer, 2-oz 12-denier 100% nylon ripstop with a waterproof/breathable barrier and a DWR (durable water repellent) finish



BLK Black RAD Radar Blue TRUT True Teal

W's Alpine Houdini® Jacket

85196 | Regular fit | 179 g (6.3 oz) | XXS-XL

FABRIC H₂No[®] Performance Standard shell: 2.5-layer, 1.9-oz 30-denier 100% nylon ripstop with a waterproof/breathable barrier and a DWR (durable water repellent) finish. Fabric is bluesign[®] approved

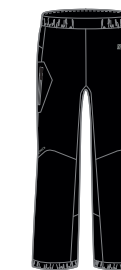


BLK Black RAD Radar Blue CRVC Carve Coral

W's Triolet Jacket

83406 | Regular fit | 519 g (18.3 oz) | XXS-XL

FABRIC Shell: 3-layer, 4.8-oz 75-denier 100% polyester plain-weave GORE-TEX[®] fabric with a DWR (durable water repellent) finish

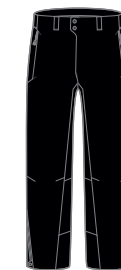


BLK Black

W's Alpine Houdini® Pants

85215 | Regular fit | 139 g (4.9 oz) | XXS-XL

FABRIC H₂No[®] Performance Standard shell: 2.5-layer, 1.9-oz 30-denier 100% nylon ripstop. Reinforcements: 2.5-layer, 2.2-oz 30-denier 100% nylon ripstop. Both with a waterproof/breathable barrier and a DWR (durable water repellent) finish. Shell fabric is bluesign[®] approved



BLK Black

W's Triolet Pants

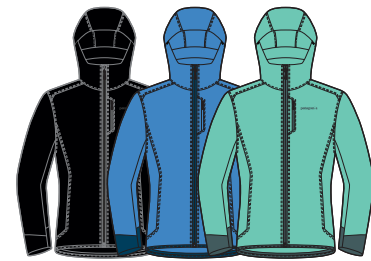
83220 | Regular fit | 593 g (20.9 oz) | XXS-XL

FABRIC Shell: 3-layer, 4.8-oz 75-denier 100% polyester plain-weave GORE-TEX[®] fabric with a DWR (durable water repellent) finish. Scuff guard: 2-layer, 6.8-oz 210-denier 100% nylon plain weave with a DWR finish

Women's Alpine

Soft Shells & Climb Pants

Jan 1 2017

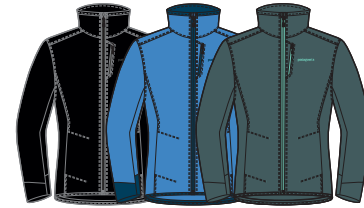


BLK Black RAD Radar Blue GLHG Galah Green

W's Levitation Hoody

83035 | Slim fit | 394 g (13.9 oz) | XXS-XL

FABRIC Shell: 5.2-oz 100% polyester stretch double weave. Cuffs: 5.4-oz 88% nylon/12% spandex stretch double weave. Shell and cuffs have a DWR (durable water repellent) finish. Fabric is bluesign® approved

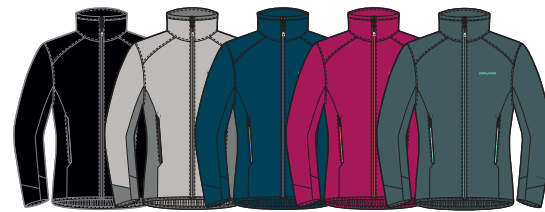


BLK Black RAD Radar Blue NUVG Nouveau Green

W's All Free Jacket

83025 | Slim fit | 289 g (10.2 oz) | XXS-XL

FABRIC Shell: 4.1-oz 100% polyester stretch double weave. Cuffs: 5.4-oz 88% nylon/12% spandex stretch double weave. Shell and cuffs have a DWR (durable water repellent) finish



BLK Black TGY Tailored Grey BSRB Big Sur Blue CFTP Craft Pink NUVG Nouveau Green

W's Adze Hybrid Jacket

83455 | Regular fit | 488 g (17.2 oz) | XXS-XL

FABRIC Shell: 3-layer, 9-oz Polartec® Windbloc® 93% polyester/7% spandex stretch woven with fleece grid backer. Side panels, inset and cuffs: 5.5-oz 88% nylon/12% spandex stretch double weave. All with a DWR (durable water repellent) finish



BLK Black FGE Forge Grey

W's Simul Alpine Pants

83065 | Slim fit | 343 g (12.1 oz) | 0, 2, 4, 6, 8, 10, 12, 14

FABRIC Shell: 5.2-oz 100% polyester stretch double weave. Yoke and gusset: 5.4-oz 88% nylon/12% spandex stretch double weave. All with a DWR (durable water repellent) finish. Fabric is bluesign® approved



BLK Black OKSB Oaks Brown CFTP Craft Pink NUVG Nouveau Green

W's RPS Rock Pants

83075 | Regular fit | 275 g (9.7 oz) | 0, 2, 4, 6, 8, 10, 12, 14

FABRIC 4.5-oz 52% nylon/48% polyester stretch plain weave with a DWR (durable water repellent) finish

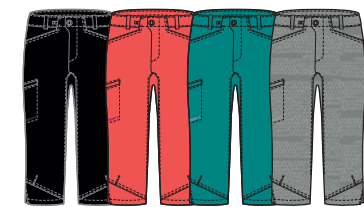


BLK Black OKSB Oaks Brown BSRB Big Sur Blue CRVC Carve Coral TRUT True Teal WVDG Wavelength: Drifter Grey

W's Venga Rock Pants

83085 | Slim fit | 320 g (11.3 oz) | 0, 2, 4, 6, 8, 10, 12, 14

FABRIC 5.4-oz 98% organic cotton/2% spandex plain weave



BLK Black CRVC Carve Coral TRUT True Teal WVDG Wavelength: Drifter Grey

W's Venga Rock Capris

83095 | Slim fit | 298 g (10.5 oz) | 0, 2, 4, 6, 8, 10, 12, 14

FABRIC 5.4-oz 98% organic cotton/2% spandex plain weave

Women's Alpine

Down Insulation

Jan 1 2017



BLK Black FEA Feather Grey

W's Ultralight Down Hoody

84772 | Regular fit | 269 g (9.5 oz) | XXS-XL

FABRIC Shell and lining: 0.85-oz 15-denier 100% nylon ripstop Pertex Quantum® built with Y-shaped filament technology; with a DWR (durable water repellent) finish. Insulation: 800-fill-power Traceable Down (goose down traced from parent farm to apparel factory to help ensure the birds that supply it are not force-fed or live-plucked). Fabric is bluesign® approved

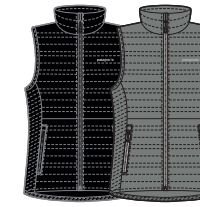


BLK Black FEA Feather Grey CFTP Craft Pink TRUT True Teal

W's Ultralight Down Jacket

84762 | Regular fit | 232 g (8.2 oz) | XXS-XL

FABRIC Shell and lining: 0.85-oz 15-denier 100% nylon ripstop Pertex Quantum® built with Y-shaped filament technology; with a DWR (durable water repellent) finish. Insulation: 800-fill-power Traceable Down (goose down traced from parent farm to apparel factory to help ensure the birds that supply it are not force-fed or live-plucked). Fabric is bluesign® approved

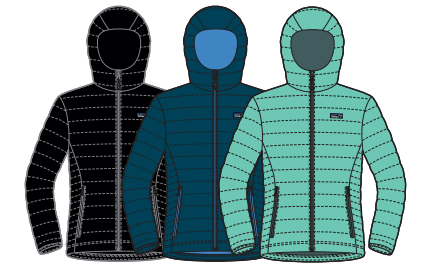


BLK Black FEA Feather Grey

W's Ultralight Down Vest

84781 | Regular fit | 159 g (5.6 oz) | XXS-XL

FABRIC Shell and lining: 0.85-oz 15-denier 100% nylon ripstop Pertex Quantum® built with Y-shaped filament technology; with a DWR (durable water repellent) finish. Insulation: 800-fill-power Traceable Down (goose down traced from parent farm to apparel factory to help ensure the birds that supply it are not force-fed or live-plucked). Fabric is bluesign® approved

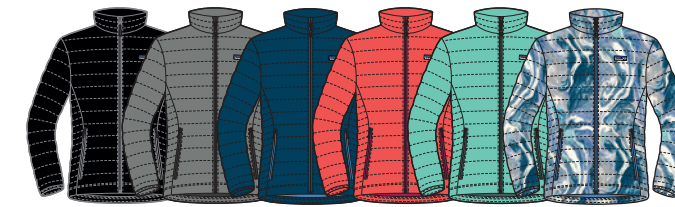


BLK Black BSRB Big Sur Blue GLHG Galah Green

W's Down Sweater Hoody

84711 | Regular fit | 371 g (13.1 oz) | XXS-XL

FABRIC Shell: 1.4-oz 20x30-denier 100% recycled polyester ripstop with a DWR (durable water repellent) finish. Lining: 1.5-oz 22-denier 100% recycled polyester ripstop with a DWR finish. Insulation: 800-fill-power Traceable Down (goose down traced from parent farm to apparel factory to help ensure the birds that supply it are not force-fed or live-plucked)



BLK Black FEA Feather Grey BSRB Big Sur Blue CRVC Carve Coral GLHG Galah Green RMBS Rivermouth: Big Sur Blue

W's Down Sweater

84683 | Regular fit | 346 g (12.2 oz) | XXS-XL

FABRIC Shell: 1.4-oz 20x30-denier 100% recycled polyester ripstop with a DWR (durable water repellent) finish. Lining: 1.5-oz 22-denier 100% recycled polyester ripstop with a DWR finish. Insulation: 800-fill-power Traceable Down (goose down traced from parent farm to apparel factory to help ensure the birds that supply it are not force-fed or live-plucked)

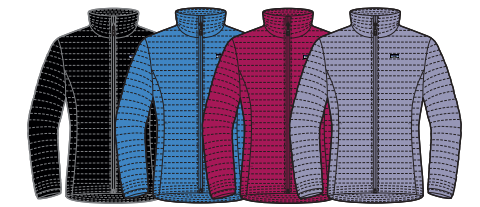


BLK Black BSRB Big Sur Blue CRVC Carve Coral GLHG Galah Green RMBS Rivermouth: Big Sur Blue

W's Down Sweater Vest

84628 | Regular fit | 221 g (7.8 oz) | XXS-XL

FABRIC Shell: 1.4-oz 20x30-denier 100% recycled polyester ripstop with a DWR (durable water repellent) finish. Lining: 1.5-oz 22-denier 100% recycled polyester ripstop with a DWR finish. Insulation: 800-fill-power Traceable Down (goose down traced from parent farm to apparel factory to help ensure the birds that supply it are not force-fed or live-plucked)



BLK Black RAD Radar Blue CFTP Craft Pink PSKP Petoskey Purple

W's Down Shirt

84751 | Slim fit | 221 g (7.8 oz) | XXS-XL

FABRIC Shell: 1.4-oz 20x30-denier 100% recycled polyester ripstop with a DWR (durable water repellent) finish. Lining: 1.5-oz 22-denier 100% recycled polyester ripstop with a DWR finish. Insulation: 600-fill-power 100% recycled down reclaimed from used down products

Women's Alpine

Synthetic Insulation

Jan 1 2017

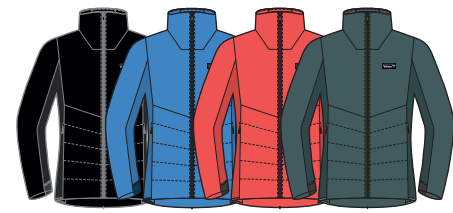
Nano-Air® insulation is ideal for high-output mountain missions, combining the "warm-when-wet" quality of synthetic insulation with the additional benefits of stretch and breathability. For dynamic movement without overheating or time-consuming layering changes, our family of exclusive, award-winning Nano-Air products is best-in-class. It uses FullRange™ insulation and light yet durable shell and liner fabrics for the optimal balance of warmth + stretch + breathability.

NEW Nano-Air® Light Hybrid

- Best suited for high-exertion users and cool conditions
- 40-g FullRange™ stretch insulation
- 40-CFM air permeability on front; 130-CFM knit on back
- Knit hybrid fabric manages moisture and quickly dispels body heat
- Perfect for continuous aerobic activities—running, nordic skiing, biking

Nano-Air®

- Best suited for active pursuits in cold weather
- 60-g FullRange™ stretch insulation
- 40-CFM air permeability throughout
- Exclusive Nano-Air materials package regulates body heat during varying levels of exertion
- Perfect for start-stop activities—climbing, ski touring, freeriding

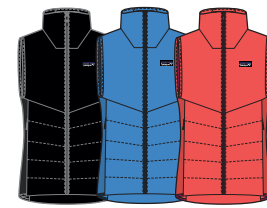


BLK Black RAD Radar Blue CRVC Carve Coral NUVG Nouveau Green

W's Nano-Air® Light Hybrid Jacket NEW

84350 | Slim fit | 252 g (8.9 oz) | XXS-XL

FABRIC Shell: 1.3-oz 20-denier 100% nylon ripstop. Lining: 2-oz 50-denier 100% nylon plain weave. Both shell and lining with mechanical stretch and a DWR (durable water repellent) finish. Insulation: 40-g FullRange™ 100% polyester stretch insulation. Knit: 6.3-oz 100% polyester stretch waffle knit with Polygiene® permanent odor control

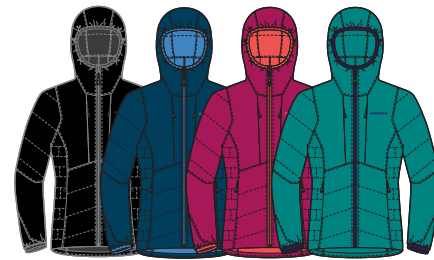


BLK Black RAD Radar Blue CRVC Carve Coral

W's Nano-Air® Light Hybrid Vest NEW

84360 | Slim fit | 159 g (5.6 oz) | XXS-XL

FABRIC Shell: 1.3-oz 20-denier 100% nylon ripstop. Lining: 2-oz 50-denier 100% nylon plain weave. Both shell and lining with mechanical stretch and a DWR (durable water repellent) finish. Insulation: 40-g FullRange™ 100% polyester stretch insulation. Knit: 6.3-oz 100% polyester stretch waffle knit with Polygiene® permanent odor control



BLK Black BSRB Big Sur Blue CFTP Craft Pink TRUT True Teal

W's Nano-Air® Hoody

84265 | Slim fit | 335 g (11.8 oz) | XXS-XL

FABRIC Shell: 1.3-oz 20-denier 100% nylon ripstop. Lining: 2-oz 50-denier 100% nylon plain weave. Both shell and lining with mechanical stretch and a DWR (durable water repellent) finish. Insulation: 60-g FullRange™ 100% polyester stretch insulation



BLK Black BSRB Big Sur Blue CFTP Craft Pink TRUT True Teal

W's Nano-Air® Jacket

84255 | Slim fit | 292 g (10.3 oz) | XXS-XL

FABRIC Shell: 1.3-oz 20-denier 100% nylon ripstop. Lining: 2-oz 50-denier 100% nylon plain weave. Both shell and lining with mechanical stretch and a DWR (durable water repellent) finish. Insulation: 60-g FullRange™ 100% polyester stretch insulation



BLK Black CFTP Craft Pink TRUT True Teal

W's Nano-Air® Vest

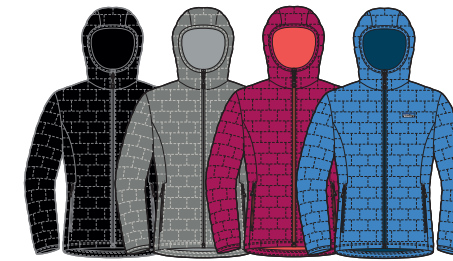
84275 | Slim fit | 193 g (6.8 oz) | XXS-XL

FABRIC Shell: 1.3-oz 20-denier 100% nylon ripstop. Lining: 2-oz 50-denier 100% nylon plain weave. Both shell and lining with mechanical stretch and a DWR (durable water repellent) finish. Insulation: 60-g FullRange™ 100% polyester stretch insulation

Women's Alpine

Synthetic Insulation

Jan 1 2017



BLK Black FEA Feather Grey CFTP Craft Pink RAD Radar Blue

W's Nano Puff® Hoody

84227 | Regular fit | 306 g (10.8 oz) | XXS-XL

FABRIC Shell and lining: 1.4-oz 22-denier 100% recycled polyester with a DWR (durable water repellent) finish. Insulation: 60-g PrimaLoft® Gold Insulation Eco 100% polyester (55% post-consumer recycled content). Fabric is bluesign® approved

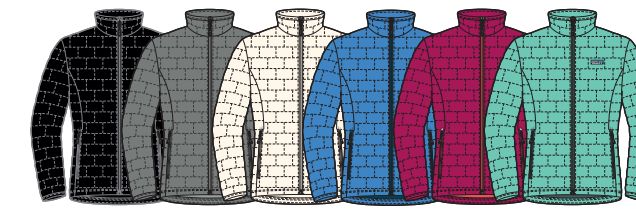


CRVC Carve Coral NUVG Nouveau Green BSRB Big Sur Blue

W's Nano Puff® Bivy Pullover

84196 | Regular fit | 312 g (11 oz) | XXS-XL

FABRIC Shell and lining: 1.4-oz 22-denier 100% recycled polyester with a DWR (durable water repellent) finish. Insulation: 60-g PrimaLoft® Gold Insulation Eco 100% polyester (55% post-consumer recycled content). Fabric is bluesign® approved

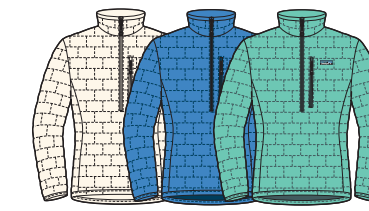


BLK Black FEA Feather Grey BCW Birch White RAD Radar Blue CFTP Craft Pink GLHG Galah Green

W's Nano Puff® Jacket

84217 | Regular fit | 283 g (10 oz) | XXS-XL

FABRIC Shell and lining: 1.4-oz 22-denier 100% recycled polyester with a DWR (durable water repellent) finish. Insulation: 60-g PrimaLoft® Gold Insulation Eco 100% polyester (55% post-consumer recycled content). Fabric is bluesign® approved



BCW Birch White RAD Radar Blue GLHG Galah Green

W's Nano Puff® Pullover

84027 | Regular fit | 232 g (8.2 oz) | XXS-XL

FABRIC Shell and lining: 1.4-oz 22-denier 100% recycled polyester with a DWR (durable water repellent) finish. Insulation: 60-g PrimaLoft® Gold Insulation Eco 100% polyester (55% post-consumer recycled content). Fabric is bluesign® approved



BLK Black FEA Feather Grey BCW Birch White CFTP Craft Pink GLHG Galah Green

W's Nano Puff® Vest

84247 | Regular fit | 207 g (7.3 oz) | XXS-XL

FABRIC Shell and lining: 1.4-oz 22-denier 100% recycled polyester with a DWR (durable water repellent) finish. Insulation: 60-g PrimaLoft® Gold Insulation Eco 100% polyester (55% post-consumer recycled content). Fabric is bluesign® approved